



St Alban's

Catholic Voluntary Academy

Reception Newsletter

Classes RLP & RH

Advent Term 2025/6



Welcome to Reception!

Welcome to St Albans Catholic Voluntary Academy and our Reception newsletter! We hope you had a wonderful summer! We are super excited to get the year started and get to know all our lovely children and their families better as we start this exciting school journey together!

Curriculum News

Our first Topic for the Autumn term is

'ADVENTURE AWAITS...'

We will focus on getting to know each other, explore our school environment and meet the different people working in it.

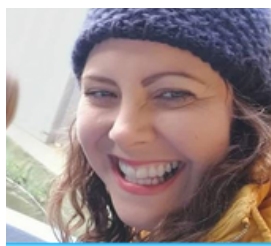
In English, our books of the week will focus on starting school and how to live out our school motto of 'Learning, Loving and Living together, side by side with God'.

In Mathematics we will start by singing number rhymes and songs before exploring the numbers 1-3 in more depth.

hello...

We would like to take this opportunity to reintroduce ourselves and welcome you and your child to Reception.

We really are one big family with all adults working across our two classrooms, creative workshop and outdoor learning area.



MRS LEATHERLAND



MR HILTON



MISS PEAKE

Your child has now been assigned to a 'base' class. This is either **RH** (Reception Hilton) or **RLP** (Reception Leatherland/Peake). This is your child's class teacher and main point of contact.

Mr Hilton is in class 5 days a week. Mrs Leatherland and Miss Peake are a job share. Mrs Leatherland teaches in school on Monday, Tuesday and Wednesday. Miss Peake teaches in school on Wednesday, Thursday and Friday



Curriculum News, con't

In our Phonics lessons we will start by learning the sounds, a, i, m, s, t and the letter shapes which represent these sounds. We will begin to learn simple VC* and CVC words such as 'it', 'sit' and 'at'. We will also learn about 'everyday' words. These are words which we use frequently, and which cannot always be sounded out.

*vowel / consonant

During the first few weeks of school, we will carry out the Reception Baseline Assessment (RBA).

This is a short statutory assessment designed to give teachers a picture of your child's current abilities in different key areas, including early vocabulary, memory and patterns. Your child cannot 'pass' or 'fail' - its main purpose is to create a starting point to measure the progress schools make with their pupils.

At St Albans, we believe in outdoor learning. Therefore, children should always have suitable clothing for outdoors, e.g. Wellington Boots and waterproof coat. These can be left on children's pegs if desired. It is also advisable for children to bring a coat everyday regardless of the weather. As it gets colder, it is important that children bring in a warm hat and gloves. Please ensure these are all clearly labelled.



We are so fortunate to have two very experienced Early Years practitioners working with the children in Reception this year. Your child will also be supported in class by Mrs Eagles and Miss Elliot.



In Reception we enjoy Wow Days and celebrate lots of cultural events over the course of the school year. We love getting involved in cooking and tasting foods associated with festivals, such as Pancake Day, Chinese New Year and Bonfire Night!

We love giving our children these important opportunities, however, school funding continues to be an issue. Therefore, we politely ask for a £5 donation per child, if you are able, to cover the costs of these unique events each half term. This is payable through our online payment system. Please bear with us as we move to a new system.

If you do have any problems accessing the parent payment portal, please speak to Mrs Cartledge in the school office.

